

Health Control Kit

E007.0

Models Affected: All DN 2145 venders with 804,917,030.31 and higher software.

Purpose: To provide a control feature for the DN 2145 to those customers that wish to vend perishable food products (i.e. dairy products). The control is configured such that when properly installed it will not allow the vending of the programmed product selections if safe temperatures have not been maintained. The DN 2145 does not meet the NAMA Specification; however, the controlling characteristics are the same as specified within the NAMA "Standard for the Sanitary Design and Construction of Food and Beverage Vending Machines", revision April 1990, section 700. The controlling characteristics are as follows:

HEALTH GUARD OPERATION

1. **Recovery Time** - After the service door is closed, vend compartment temperature must reach 45°F or less within 30 minutes. If this is not accomplished all selections with health guard enabled will be locked out. If this occurs an error will be logged as HEALTH T. This is a health timeout error.
2. An additional 15 minutes is allowed for the vend compartment temperature to reach 41°F or less. If this is not accomplished all selections with health guard enabled will be locked out. If this occurs an error will be logged as HEALTH C. This is a health code violation error.
3. **Normal Operation** - During normal operation the vend compartment temperature should remain below 41°F. However, if it should rise to 46°F or higher, the controller will allow 15 minutes to cool down to 41°F or less. If this is not accomplished all selections with health guard enabled will be locked out. If this occurs an error will be logged as HEALTH C. This is a health code violation error.
4. **Power Outage** - If the power to the vender is interrupted, vend compartment temperature may rise to an unsafe level.
 - A. If the power is restored within 15 minutes and the vend compartment temperature is greater than 45°F, the vender will allow 15 minutes to cool to 41°F or less. If this is not accomplished all selections with health guard enabled will be locked out. If this occurs an error will be logged as HEALTH C. This is a health code violation error.
 - B. If the power is restored after 15 minutes and the vend compartment temperature is less than 46°F, normal operation will resume. The vender will allow 15 minutes to cool to 41°F or less. If this is not accomplished, or if the vend compartment temperature is greater than 45°F, all selections with health guard enabled will be locked out. If this occurs an error will be logged as HEALTH C. This is a health code violation error.
 - C. If the power is out over 30 minutes, the vender will lockout all selections with health guard enabled, regardless of vend compartment temperature.

Note: *Dixie-Narco is not responsible for product spoilage, related damages, or potential health hazards due to improper handling, product rotation, or vender maintenance.*

Order Parts: 622,010,20x.x4 Health Timer Assembly

Includes:	1 - W403	Sensor
	1 - 804,917,24x.x1	Harness (ribbon)
	1 - 801,401,55x.x1	Thermometer
	2 - 900,301,50x.x1	Screw

Kit Installation Instructions:

1. Unplug the vender.
2. Mount the thermometer in the front center-top of the refrigerated area with the two screws provided in the kit. See figure 1 on page 3.
3. Remove the product from the bottom tray (tray E).
4. Lift the front edge of tray E as high as possible and remove the bottom tray guard.
5. Place something between the bottom of tray E and the top of the base Box.
(Note: The 2145 cash box works well for this.)
6. Remove the suction tube guard. See figure 3 on page 3.
7. Unplug the tray E solenoid harness from the board.
8. Remove the rope putty from each side of the inner cabinet wall where the tray E solenoid harness passes through.
9. Slide the tray E solenoid harness through the hole.
10. Install the sensor in the evaporator above the temperature control bulb. See figure 2 on page 3.
11. Plug one end of the ribbon harness on the sensor. See figure 3 on page 3.
12. Slide the other end of the ribbon harness through the hole you pulled the tray harness through in step 9.
13. Slide the tray E solenoid harness back through the hole.
14. Plug the tray E solenoid harness to the control board at the proper port.
15. Plug the ribbon harness to control board port J12.
16. Install rope putty over holes on both sides of the inner cabinet wall.
17. Install the suction tube guard removed in step 6.
18. Remove the item used to hold up tray E.
19. Install the bottom tray guard.
20. Plug in the vender and test for proper operation.

Programming Instructions:

Programming the vender to use Health Control allows the service technician to select items to ENABLE HEALTH CONTROL. When enabled, if the temperature in the vender does not reach 45°F within 30 minutes after the door is closed, a "HEALTH TIME" error will occur and lockout the enabled selection(s) from vending until after the error is cleared. Also, if the temperature in the vender goes above 45°F at any time after the cool down period, a "HEALTH CONTROL" error will occur and lockout the enabled selection(s) from vending until the error is cleared.

1. Open the main door and press the Mode Selection button three times.
2. The display will read "SETUP MODE".
3. Press the number "7" on the keypad and the display will scroll "ENABLE HEALTH CONTROL".
4. Press the "*" key and the display will show "ITEM".
5. Press the keypad buttons that you wish to enable Health Control (i.e. A1). The display will flash "ENABLED" and return to "ITEM". To disable, press the keypad buttons again and the display will flash "DISABLED" and return to "ITEM".
6. Press "CLR" to return to "SETUP MODE".

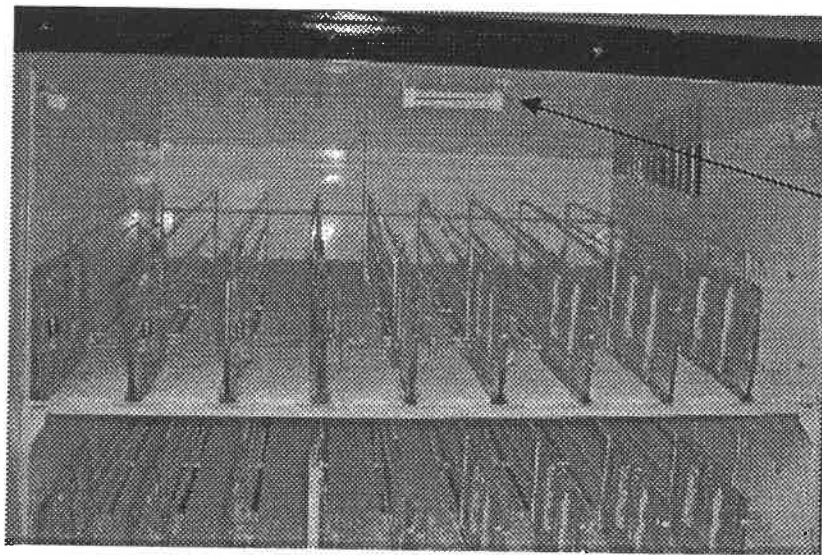


Figure 1

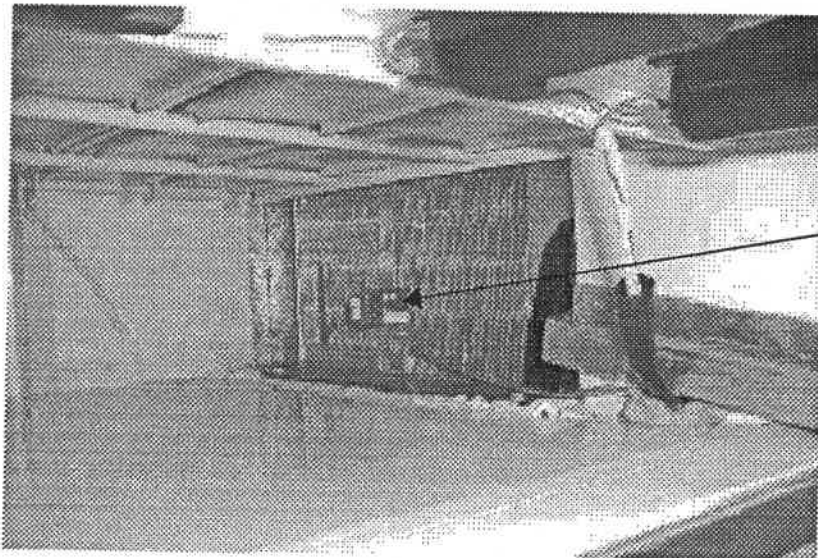


Figure 2

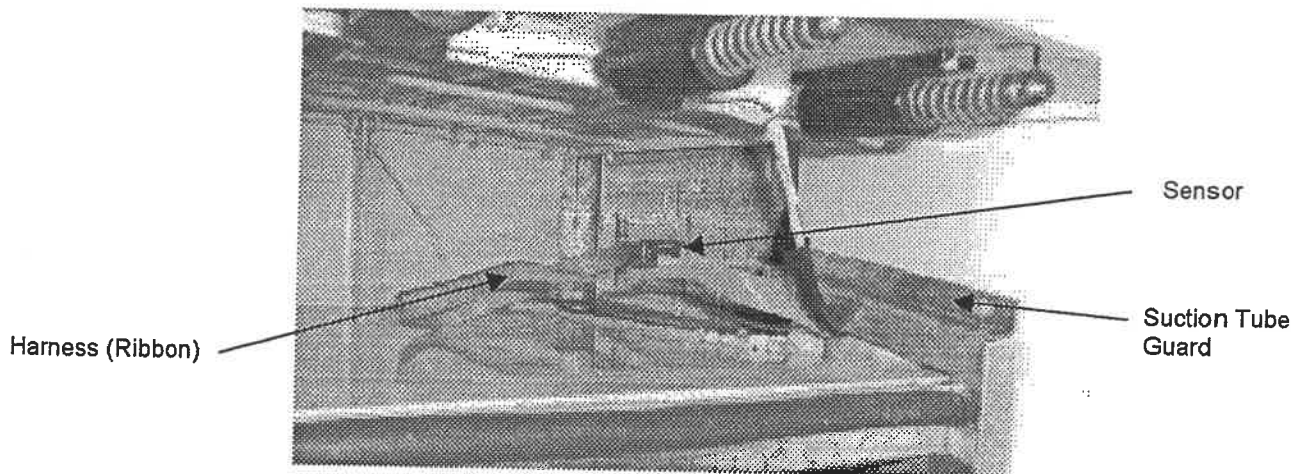


Figure 3

For instructions on programming the vender to use Health Control, see page 2.